



BRIDGES



Urgent request for spherical bearings. The original delivery time was estimated at 28-30 weeks due to material availability, yet D.S. Brown delivered in only 17 weeks!

Union Road Bridge

D.S. Brown Purchasing, Quality and Operations teams worked together to meet an urgent request for **Versiflex™ HLMR Spherical Bearings** for the new Union Road Bridge in San Benito County, California.

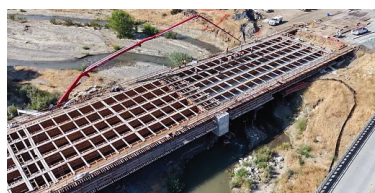
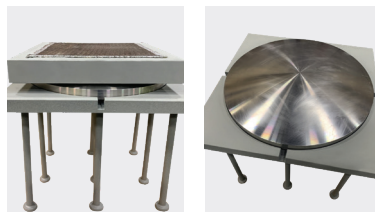
The complex nature of these bearings presents challenges for timely material procurement which in turn, effects fabrication times. The D.S. Brown Engineering, Purchasing and Operations teams worked in unison to reduce those impacts and achieve the customer need dates in an unprecedented 17 weeks.

The spherical bearing request was released from engineering on Jan. 2, 2024. The first shipment was quoted for 28-30 weeks, but the 24 spherical bearings were actually shipped on April 30 and May 1, 2024!

PRODUCTS USED

Versiflex™ HLMR Spherical Bearing Assemblies

These high load bearings are used for isolating and supporting heavy structures. Woven PTFE handles up to 5500 psi of pressure. Allows for rotations in excess of +/- .03 radians. Certified by American Institute of Steel Construction



INSTALLATION

2023-2025

San Benito River
California

OWNER

- San Benito County, California

CONSTRUCTION TEAM

- MCM Construction and MNS Engineers

STATS

- \$36.3M Project
- Scheduled opening Fall 2025
- 11,000 Average Daily Traffic
- Originally built in 1959
- 633 feet in length



Bridge the World with Leading Infrastructure Solutions