

Project Spotlight

**D.S. BROWN**
The D.S. Brown Company

www.dsbrown.com

D.S. Brown Co.

Founded in 1890 and based in North Baltimore, Ohio, USA, The D.S. Brown Company is a worldwide designer, manufacturer and supplier of engineered products for the highway and bridge construction markets.

D.S. Brown is fully integrated, performing and controlling all requirements of a project internally:

- Research and Development
- Engineering Design/CAD Detailing
- Load Testing
- Rubber Compounding, Mixing, Extruding and Molding
- Custom Steel Fabrication and Machining

**PROTECT
YOUR
INVESTMENT**



HEADQUARTERS

**300 East Cherry
North Baltimore, Ohio 45872**

CONTACT

Phone (419) 257-3561

Fax (419) 257-2200

www.dsbrown.com

© 2009 D.S. Brown - All rights reserved.
DSB ML-Homer Hadley Bridge - Project Spotlight-01

Homer M. Hadley Memorial Floating Bridge

Project: Homer M. Hadley Memorial Floating Bridge (I-90)

Location: Seattle, Washington

Project Description: Installation of four **DS-1200 B Maurer™ Swivel Expansion Joint Assemblies** by the **D.S. Brown Company**. Two of the expansion joints were 42' long, 12' wide, and weighed 91,000 lbs. The other two joints were 66' long, 12' wide, and weighed 135,000 lbs apiece. All of the expansion joints were fabricated at D.S. Brown's North Baltimore, Ohio facility. The joint assemblies can accommodate up to 40" of movement and were shipped out as complete units, ready for placement into the bridge deck blockouts.

Install Date: May and July, 2009

Bridge Owner: WSDOT

Contractor: General Construction Co.

Design: WSDOT

Notable Features of Project: Expansion joints were shipped and installed in a compressed configuration before expanding them prior to concrete placement.



Homer M. Hadley and Lacey V. Murrow Memorial Floating Bridges.

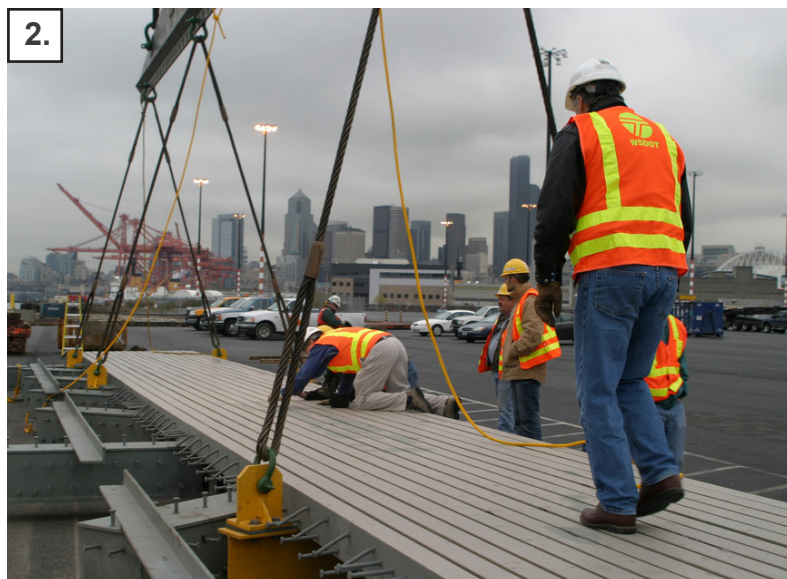


Expansion Joint being loaded onto truck.

Project Spotlight

**D.S. BROWN**
The D.S. Brown Company

Homer M. Hadley Memorial Bridge



1. Expansion Joint Leaving the D.S. Brown Facility.

2. WSDOT project engineers and bridge inspectors inspecting an expansion joint upon arrival in Seattle.

3. General Construction Co. crews lower the new expansion joint into the I-90 express lanes.

4. New expansion joint installed in the westbound mainline lane.

**D.S. BROWN**

Project Photos Courtesy of: WSDOT and The D.S. Brown Company